

# Technical Data Gas Control Valve Type SVL

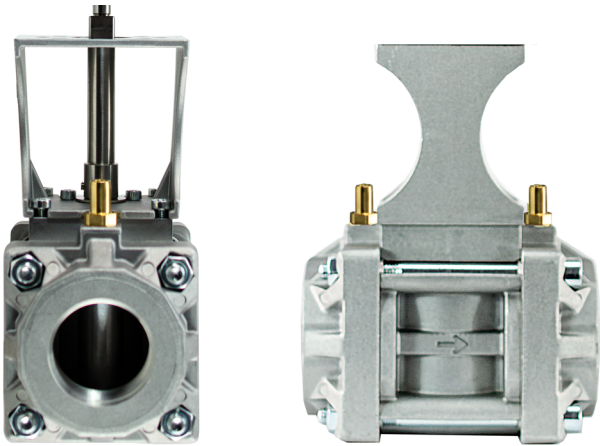


Fig. 1 Gas control valve type SVL – 668M2400

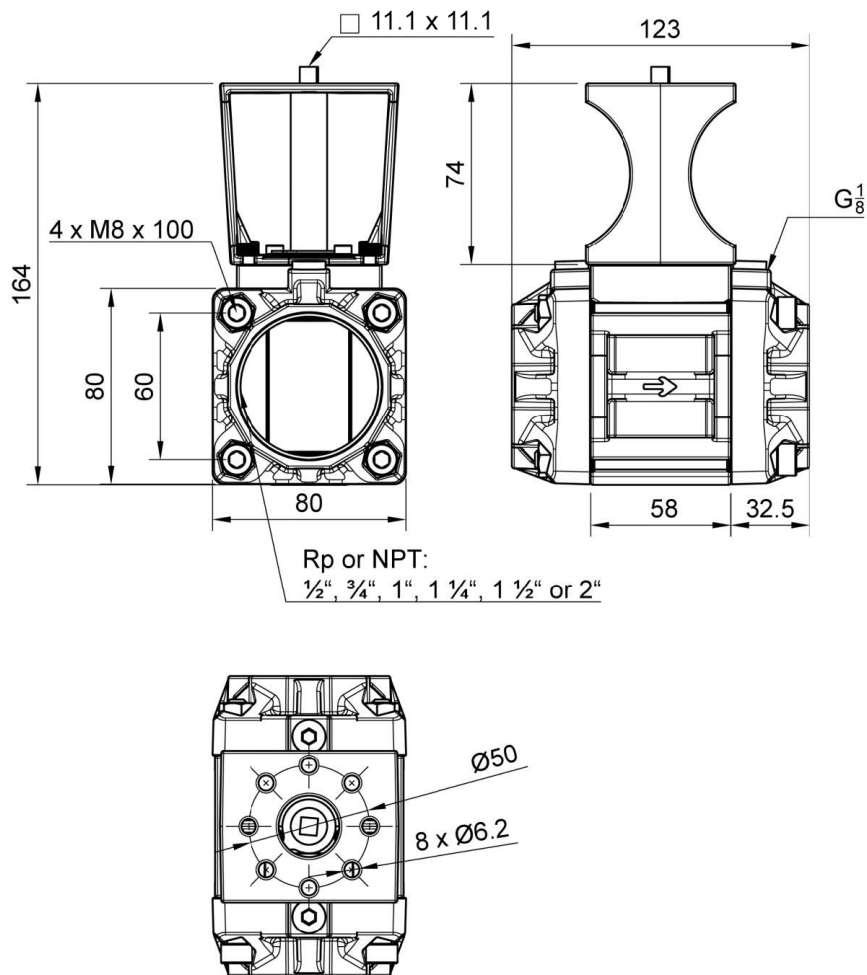


Fig. 2 Dimensional drawing gas control valve type SVL – 668M2400 (dimensions in mm)

## Technical Data Gas Control Valve Type SVL



Fig. 3 Gas control valve type SVL – 668M2400 mounted on actuator

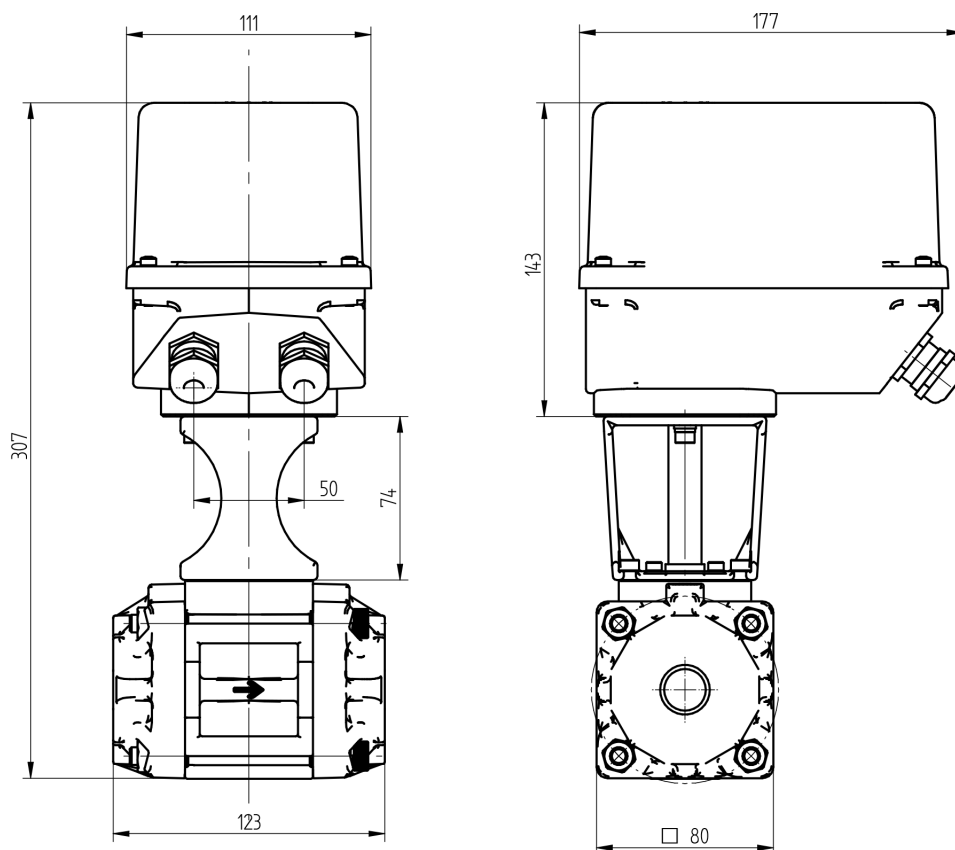


Fig. 4 Dimensional drawing of gas control valve type SVL – 668M2400 mounted on actuator (dimensions in mm)

## Technical Data Gas Control Valve Type SVL

Technical Data		
Gas type	<p>For gases of gas families 1, 2, 3 and other neutral gaseous media.</p> <p>Suitable for gases up to max. 0,1 Vol. % H<sub>2</sub>S</p> <p>The gas must be dry under all circumstances and must not condense.</p> <p>Suitable for hydrogen.</p> <p>The SVL gas control valve has been tested by TÜV SÜD for the suitability of natural gas-hydrogen mixtures and hydrogen as a flow medium.</p>	
Material	Housing	Aluminium
	Shaft	Aluminium
	Control cylinder	Aluminium
	Flange	Aluminium
	Seal	NBR
Weight	Approx. 1.6 kg   3.53 lb incl. 2 x flange plates 1"	
Connection	Rp or NPT thread	
Operating pressure	Max. 50 kPa (500 mbar   7.25 psi)	
Adaptation	Outer square 11.1 x 11.1 mm   0.44 x 0.44" in	
Adjusting speed	Max. 1.5 s/90°	
Direction of rotation with view to the shaft	<p>left</p> <p>suitable with clockwise-turning LAMTEC actuators</p>	
Mounting position	Horizontal to vertical, actuator not hanging downwards	
Mounting actuator	<p>No separate coupling/bracket is required.</p> <p>The bracket is part of the valve.</p> <p>Delivery incl. mounting material.</p>	
Position indicator	Integrated	
Type of actuator	Suitable for electric actuator 668M2006, 668M2020 with internal square 11.1 x 11.1 mm   0.44 x 0.44" in (IVK11), clockwise-turning	
Flow rate	Up to DN40 linear, DN50 nearly linear	
Test specification	DIN EN 13611:2022 and DIN EN161:2013	
Explosion protection	<p>The gas control valve is not covered by the directive 2014/35/EU, because with the loads occurring in practice, no effective ignition source occurs even in the event of a fault.</p> <p>The valve must be grounded. This connection is made by screwing it into the grounded gas pipeline.</p>	

### Environmental conditions

<b>Operation</b>	perm. temperature range	-20 ... +60 °C   -4 ... +140 °F
<b>Transport</b>	perm. temperature range	-20 ... +60 °C   -4 ... +140 °F
<b>Storage</b>	perm. temperature range	-20 ... +60 °C   -4 ... +140 °F

### NOTICE

The limits of the technical data must be strictly adhered to.

# Technical Data Gas Control Valve Type SVL

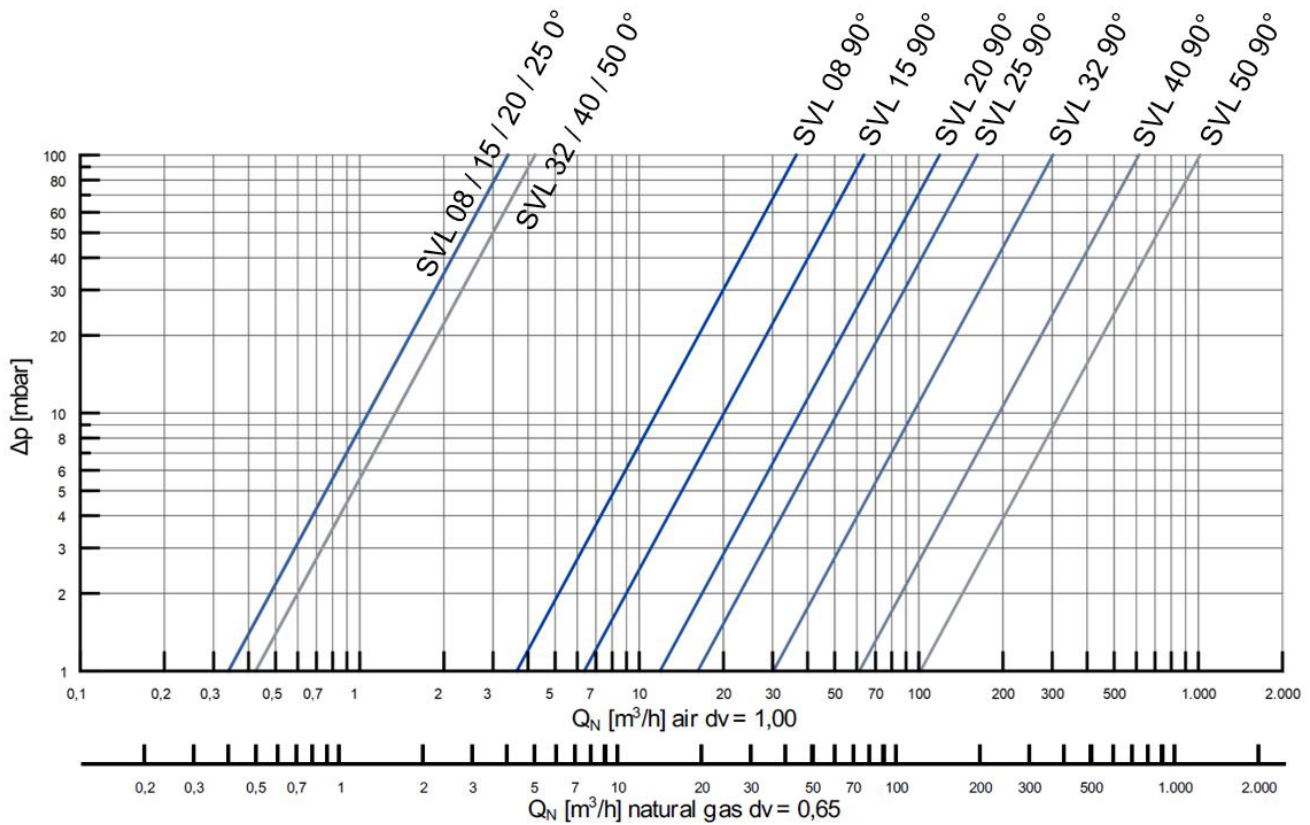


Fig. 5 Flow curve gas control valve 668M2400

Type	Control valve position		mounted flanges during measurement
	0°	90°	
SVL08	0.4	4.3	FL-SVL R ½"
SVL15	0.4	7.5	FL-SVL R ¾"
SVL20	0.4	14.0	FL-SVL R 1"
SVL25	0.4	19.1	FL-SVL R 1¼"
SVL32	0.5	35.6	FL-SVL R 1½"
SVL40	0.5	72.3	FL-SVL R 2"
SVL50	0.5	119.6	FL-SVL R 2"

Tab. 6 KV values (specifications in m³/h)

## NOTICE

For all valve sizes, we recommend using an actuator with a nominal torque of at least 3 Nm.

For nominal torques > 3 Nm, ensure that the range limits of the position indicator are observed, as otherwise it may be damaged.

# Technical Data Gas Control Valve Type SVL

## Order Information

Gas control valve type SVL, aluminium up to 60 °C | +140 °F

Designation/type	Order no.
<ul style="list-style-type: none"> <li>- DN08 ... DN40 linear, DN50 approximately linear</li> <li>- Mounting between threaded flange, connection range ½" - 2"</li> <li>- Rotation angle 90°</li> <li>- for gas families 1, 2, 3 and other neutral gaseous media</li> <li>- Hydrogen</li> <li>- max. operating pressure: 500 mbar</li> <li>- max. differential pressure: 500 mbar</li> <li>- Ambient temperature: -20 ... +60 °C   -4 ... +140 °F</li> <li>- Medium temperature: -20 ... +60 °C   -4 ... +140 °F</li> <li>- max. actuation speed 1.5 s/90°</li> <li>- Can be used for electric actuator 668M2006, 668M2020 with inner square 11.1 x 11.1 mm   0.437 x 0.437" in (IVK11), clockwise-turning</li> <li>- No separate connector/console is needed. The console is a component of the damper.</li> </ul>	668M2400

A10 "NOMINAL DIAMETER"	Selection
NOMINAL DIAMETER DN08 - LINEAR	08
NOMINAL DIAMETER DN15 - LINEAR	15
NOMINAL DIAMETER DN20 - LINEAR	20
NOMINAL DIAMETER DN25 - LINEAR	25
NOMINAL DIAMETER DN32 - LINEAR	32
NOMINAL DIAMETER DN40 - LINEAR	40
NOMINAL DIAMETER DN50 - NON-LINEAR	50

A20 "GAS CONNECTION"	Selection
GAS CONNECTION INTERNAL THREAD Rp ½"	R12
GAS CONNECTION INTERNAL THREAD Rp ¾"	R34
GAS CONNECTION INTERNAL THREAD Rp 1"	R1
GAS CONNECTION INTERNAL THREAD Rp 1 ¼"	R114
GAS CONNECTION INTERNAL THREAD Rp 1 ½"	R112
GAS CONNECTION INTERNAL THREAD Rp 2"	R2
GAS CONNECTION INTERNAL THREAD NPT ½"	N12
GAS CONNECTION INTERNAL THREAD NPT ¾"	N34
GAS CONNECTION INTERNAL THREAD NPT 1"	N1
GAS CONNECTION INTERNAL THREAD NPT 1 ¼"	N114
GAS CONNECTION INTERNAL THREAD NPT 1 ½"	N112
GAS CONNECTION INTERNAL THREAD NPT 2"	N2

A30 "DIRECTION OF ROTATION"	Selection
FOR CLOCKWISE-TURNING LAMTEC ACTUATORS	R

A40 "HAND FEED"	Selection
WITHOUT HAND FEED, for mounting on actuator	0
WITH HAND FEED, infinitely adjustable locking lever	H

The information in this publication is subject to technical changes.



---

**LAMTEC GmbH & Co. KG**

Josef-Reiert-Straße 26

69190 Walldorf

GERMANY

Telefon: +49 (0) 6227 6052-0

Telefax: +49 (0) 6227 6052-57

[info@lamtec.de](mailto:info@lamtec.de)  
[www.lamtec.de](http://www.lamtec.de)

