

Technical Data GUI615

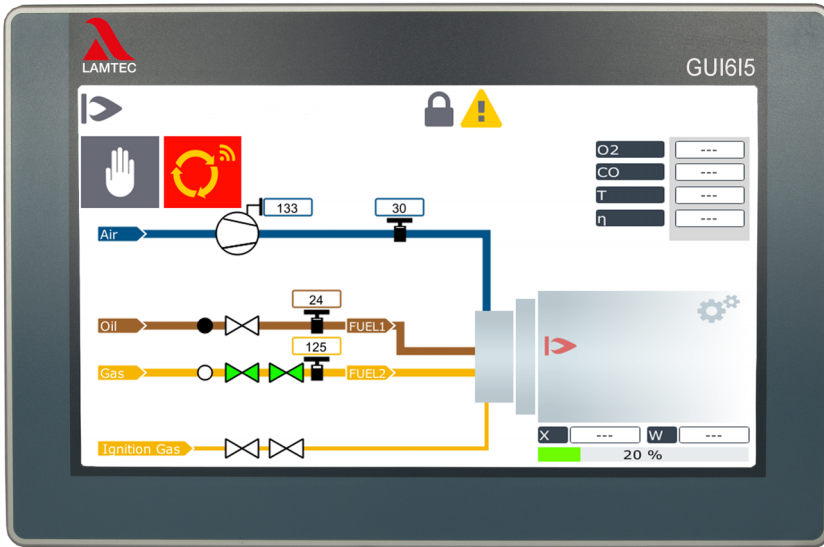


Fig. 1 GUI615

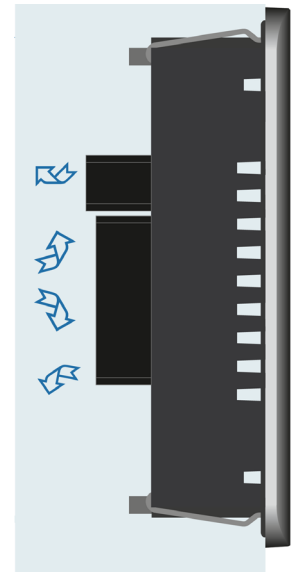


Fig. 2 Ensure unobstructed air circulation! >20 mm / 0.79" in

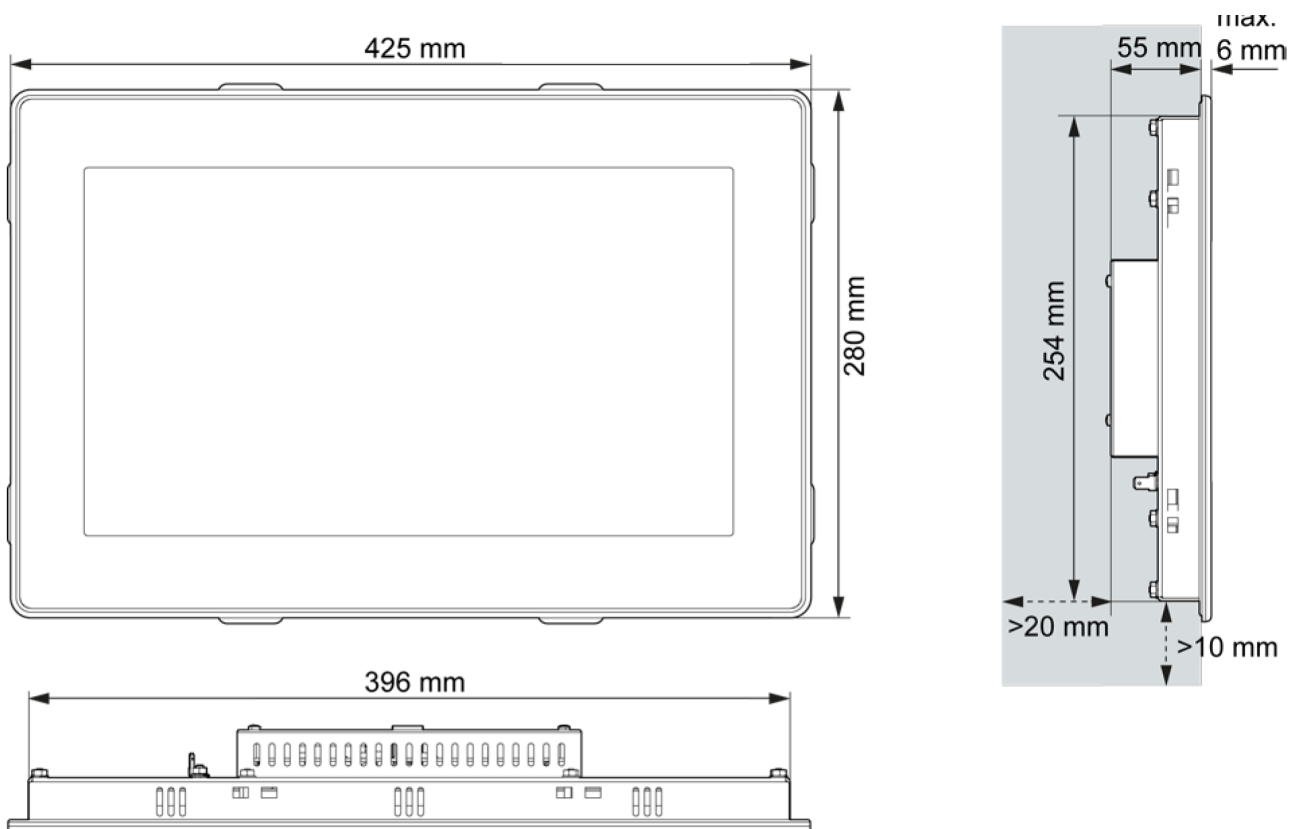
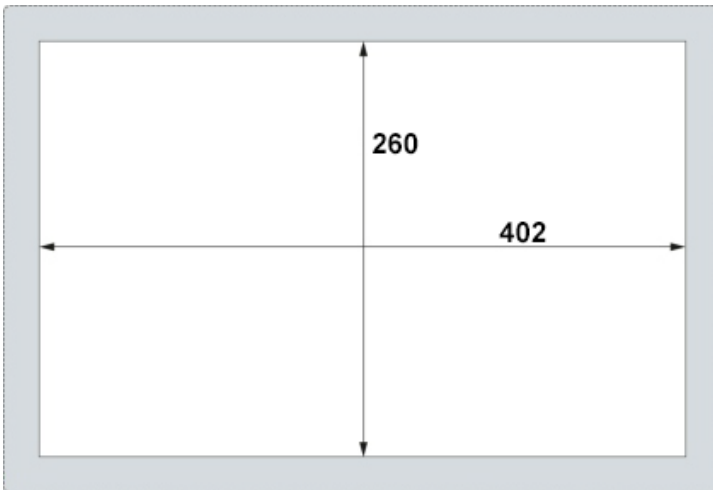


Fig. 3 Dimensional drawing GUI615

Technical Data GUI615



Cut a rectangular panel cut out in the support material

Height: 260.0 mm | 10.24" in

Width: 402.0 mm | 16.54" in

Max. corner radius: 3.0 mm | 0.12" in

Optimum thickness of the carrier material

Degree of protection IP65 with twist-lock catches: only for 1.5 ... 3.0 mm | 0.06 ... 0.12" in

Optimal: 2.0 ... 3.0 mm | 0.08 ... 0.12" in

Max.: 4.0 mm | 0.16" in

Fig. 4 Panel cut out GUI615 (dimensions in mm)

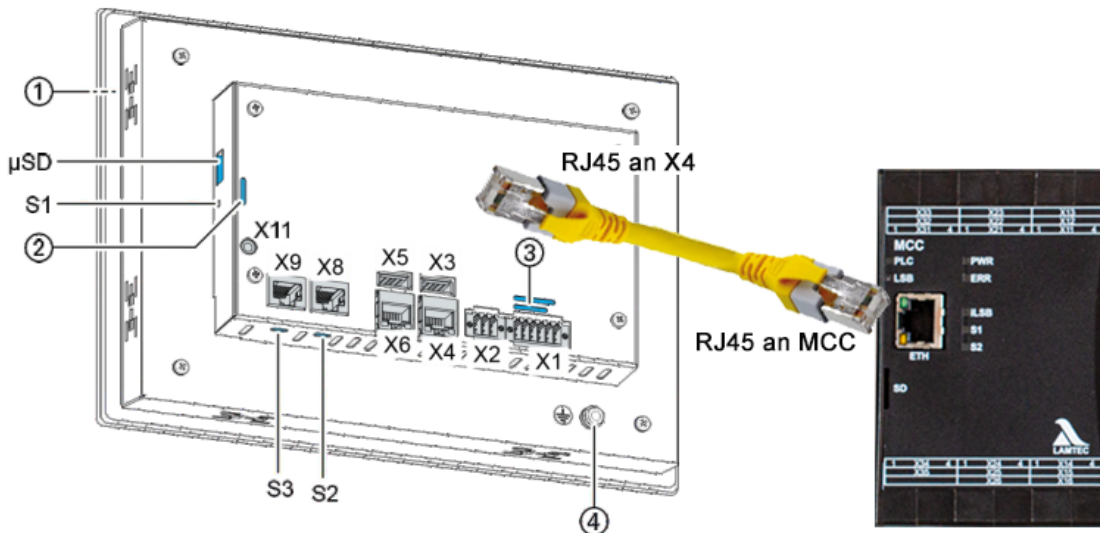


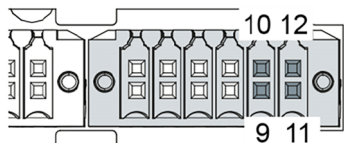
Fig. 5 GUI615 connections

Connections

| Item | Designation | Item | Designation |
|------|------------------------------------|------|--|
| 1 | Display 15.6" | X6 | EtherCAT (ETH1) |
| 2 | LEDs: PWR, RUN/Stop, Error (DC) | X8 | CAN bus (DC) |
| 3 | LEDs: Power, digital IO | X9 | RS-232/RS-485 |
| 4 | Ground connection | X11 | Debug interface (do not use – only for LAMTEC service staff) |
| X1 | Power supply, digital input/output | S1 | Function key |
| X2 | Analogue inputs | S2 | CAN termination resistor (120 Ω) |
| X3 | USB 2.0 | S3 | RS-485 termination resistor (120 Ω) |
| X4 | Ethernet (ETH0) | μSD | microSD card connection (for memory extension) |
| X5 | USB 2.0 | | |

Technical Data GUI615

X1 power supply voltage, inputs PIN 9-12



PIN 9 and 12: L+ 24 V supply 24 VDC (–15 %/+20 %)
 PIN 11: GND

Fig. 6 GUI615 X1 PIN assignment

Technical Data GUI615

| | |
|--|---|
| Dimensions (H × W × D) | 425 × 280 × 55 mm / 16.73 x 11.02 x 2.16" in |
| Weight | 3 kg / 6,61 lb |
| Installation | removable tensioned clamps |
| Supply voltage | 24 VDC –15/+20 % SELV max. AC voltage component 5 % with inverse-polarity protection |
| Power consumption | |
| Module electronics current consumption | type 0.8 A, max. 1.2 A at +24 VDC |
| Display diagonal/resolution | 15.6" display, 1366 × 768 (WXGA) |
| Touch screen type | resistive |
| Colours | TFT: 16.7 M (24 bits/pixel) |
| CPU | 800 MHz ARM® CPU with Cortex™-A9 single core |
| RAM/flash/non-volatile memory | 512 MB RAM/2048 MB flash/100 kB FRAM |
| Communication interfaces | 2x Ethernet, 10/100 Base, RJ45 |
| Flammability | |

Environmental conditions

| | | |
|-----------------------------|-------------------------------|---|
| Operation | permitted temperature range | 0 ... +55 °C (condensation prohibited) 32 ... 131 °F |
| | permitted humidity | max. 85 %, non-condensing |
| Transport/Storage | permitted temperature range | -20 ... +70 °C (condensation prohibited) -4 ... 158 °F |
| | permitted humidity | max. 85 %, non-condensing |
| Degree of protection | DIN EN 60529 | IP20 IP65 front |
| Protection class | DIN EN 61140 | III |
| Electronic safety | insulation resistance | EN 61131-2 |
| | insensitivity to interference | EN 61131-2 |
| | emitted interference | EN 55011 class B, group 1 |
| Mechanic safety | vibration | sinusoidal (EN 90068-2-6) Test: Fc; 10 - 150 Hz, 1 G (operating mode) |
| | shock resistance | 15 G (approx. 150 m/s ² / 492.13 ft/s ²), duration 10 ms, semi-sinusoidal (EN 6068-2-27) Test: Ea |

Technical Data GUI615

Certification

| | |
|----|--|
| CE | DIN EN 61131-2 DIN EN 61010-2-201 DIN EN 61000-6-3 |
| UL | UL 61010-2-201 |

NOTICE

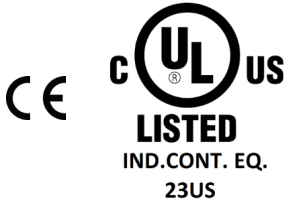
The limits of the technical data must be strictly adhered to.

Order Information

Display modules GUI615

| Description/Type | Order no. |
|---|-----------|
| GUI615 Graphical display module 15", 24 VDC, panel installation Touch panel with graphic menus for convenient curve programming, extended parameter setting and all system queries | 668R1004 |

Approvals



The information in this publication is subject to technical changes.



LAMTEC GmbH & Co. KG

Josef-Reiert-Straße 26
69190 Walldorf
GERMANY

Telefon: +49 (0) 6227 6052-0
Telefax: +49 (0) 6227 6052-57

info@lamtec.de
www.lamtec.de

