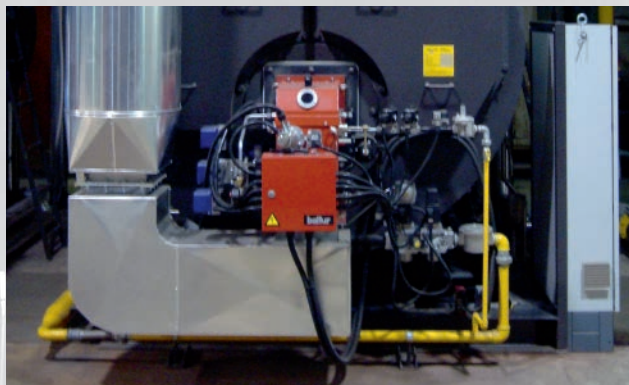


# LAMTEC Meß- und Regeltechnik für Feuerungen GmbH & Co. KG



### Company Name/Address

LAMTEC Meß- und Regeltechnik für Feuerungen GmbH & Co. KG, Wiesenstraße 6, D-69190 Walldorf.

### Management

Hans-Jürgen Altendorf; Harald Weber; Olaf Winne.

### History

- Formation: 1<sup>st</sup> July 1995 as a Management Buyout of ABB.
- Expertise in combustion optimisation since 1982.
- Integrated solutions for combustion control, optimisation and energy efficiency. Sensor technology for regulating and controlling combustion processes.

### Investments

- LAMTEC Leipzig GmbH & Co. KG; 100 % subsidiary company, formation in September 1998.
- LAMTEC East Asia Ltd. Buchon South Korea, 80 %, formation in January 2006.
- LAMTEC Polska, Ruda Slaska, Poland, formation 2000.
- LAMTEC S.E.A Company, Kuching, Sarawak, Malaysia, formation May 2010.
- OOO LAMTEC, Moscow, Russia, formation November 2011.
- LAMTEC America Inc. Hastings MN, USA, formation 2016.
- LAMTEC MENA, Nasr City/Cairo, Egypt, formation 2016.

### Number of Employees

More than 100 in total.

### Product Range

*Burner control units* for industrial burners of medium to high firing rates, integrated and electronic fuel/air ratio controls for accurate combustion management. SIL classification according to EN61580. *Flame scanners: UV/IR* and ionisation: partially self-controlled approved for continuous operation in industrial combustion plants, power plants and process heating. SIL classification according to EN61580. *Exhaust gas sensors:* for O<sub>2</sub> and CO<sub>e</sub> measurement in industrial burner, power plant and process heating applications. O<sub>2</sub> trim for the improvement of the efficiency of combustion plants. CO control: to achieve optimum efficiency of combustion plants, failsafe, SIL 2 according to EN61508. *Mass flow measurement grids:* for the volumetric measurement of gas flow. *Combined operating and fault message*

### Contact

Harald Weber  
Managing Director  
Head: Sales, Service and Sensor-Technology  
Telephone +49 (0) 06227 605 241  
weber@lamtec.de

[info@lamtec.de](mailto:info@lamtec.de)

[www.lamtec.de](http://www.lamtec.de)

*devices and systems* for the signalling of the operating states and to record 'first value/new value' fault indications in industrial and process plants. The fields of applications range from small domestic combustion burners and plants for commercial properties through to conventional oil and/or gas firing plants for industry to complex applications in the power generation and process sectors. *Ignition/ Pilotburner. Boiler Control and Boiler/Burner Visualisation.*

### Manufacturing

All products mentioned above are developed by LAMTEC and are manufactured exclusively for LAMTEC.

### Advantages

Comprehensive know-how, expertise and experience in the field of combustion control and optimisation. The choice of many of Europe's leading burner makers for the control and regulation of modern low-emission and multi-fuel burners. Co-operation with manufacturers, customers, trade associations and research institutions to develop systems and technologies to improve combustion efficiency, lower fuel usage and reduce harmful emissions whilst ensuring the highest levels of safety. An innovative and flexible small to medium enterprise with the technical resources to identify and solve complex problems through the development of state-of-the-art hardware and software solutions.

### Service

A customer-centric company providing first class backup and support at all stages from specification through to installation, commissioning, training, after-sales and service.

### Certification

- ISO9001:2008.
- EU Type Approvals.
- SIL Certification EN 61508.
- TÜV suitability tested O<sub>2</sub> measurement for operation of emission measurement.
- Other worldwide approvals: APAVE, GOST, AGA and UL.
- Marine Certification Germanischer Lloyd and Lloyds Register.

