



LAMTEC High Energy Igniters

HEI 500

HEI 600



Sensors and Systems for Combustion Engineering

www.lamtec.de

LAMTEC High Energy Igniters

BASIC HEI500 and High-End HEI600

Application

- Ignites liquid and gaseous fuels in burners of any capacity
- Compact design: control unit and ignition lance combine as one unit
- 100% waterproof
- Suitable for Class 3 especially according to NFPA 8501/8502 for electrical ignition devices
- Available for Hazardous Areas
- High intensity sparks over long distances due to long lances

BASIC HEI500

Technical Data

- | | |
|-------------------------|-----------------------------------------------|
| ■ Ignition energy: | 18 Joule |
| ■ Ignition frequency: | 2 Hz |
| ■ Power supply: | 115/230 VAC 50 Hz (60 Hz on request) |
| ■ Ambient temp.: | -40 °C ... +60 °C |
| ■ Input power | 110 W (at 2 sparks per second) |
| ■ Explosion protection: | Ex-Zone I for electrical power unit available |
| ■ Degree of protection: | IP65 |



Steel or sheet steel housing
with control unit



Ignition lance

High -End HEI600

Technical Data

- Ignition energy: 10 Joule
- Ignition frequency: 26 Hz
- Power supply: 115/230 VAC 50 Hz (60 Hz on request)
- Ambient temp: -40 °C ... +60 °C
- Input power 724 W (at 26 sparks per second)
- Explosion protection: Ex-Zone I for electrical power unit available
- Degree of protection: IP65 / IP66



Cast steel housing with control unit and ignition lance

Ignition lance

Technical Data

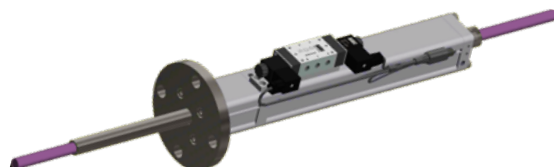


- Available length: Up to 13 m
- Minimum length: 300 mm
- Additional length: 300 mm (each)
- Outer Diameter: 16 mm
- Easy to replace ignition tip: Standard + special

Retraction device

Criteria for the use of the pneumatic retraction device:

- Ignition lance is permanently exposed above 600 °C
- The ignition tip is exposed at permanent temperature of above 720 °C (standard ignition tip)
- The ignition tip is exposed at permanent temperature of above 1.000 °C (special ignition tip)
- High pollution in the combustion



**LAMTEC Meß- und Regeltechnik
für Feuerungen GmbH & Co. KG**

Josef-Reiert-Straße 26
D-69190 Walldorf

Telephone: +49 (0) 6227 6052-0

Fax: +49 (0) 6227 6052-57

info@lamtec.de

www.lamtec.de

