

Technical Data Elektrical Actuator TPS60.1 - 60 Nm



Fig. 1 Actuator 60 Nm

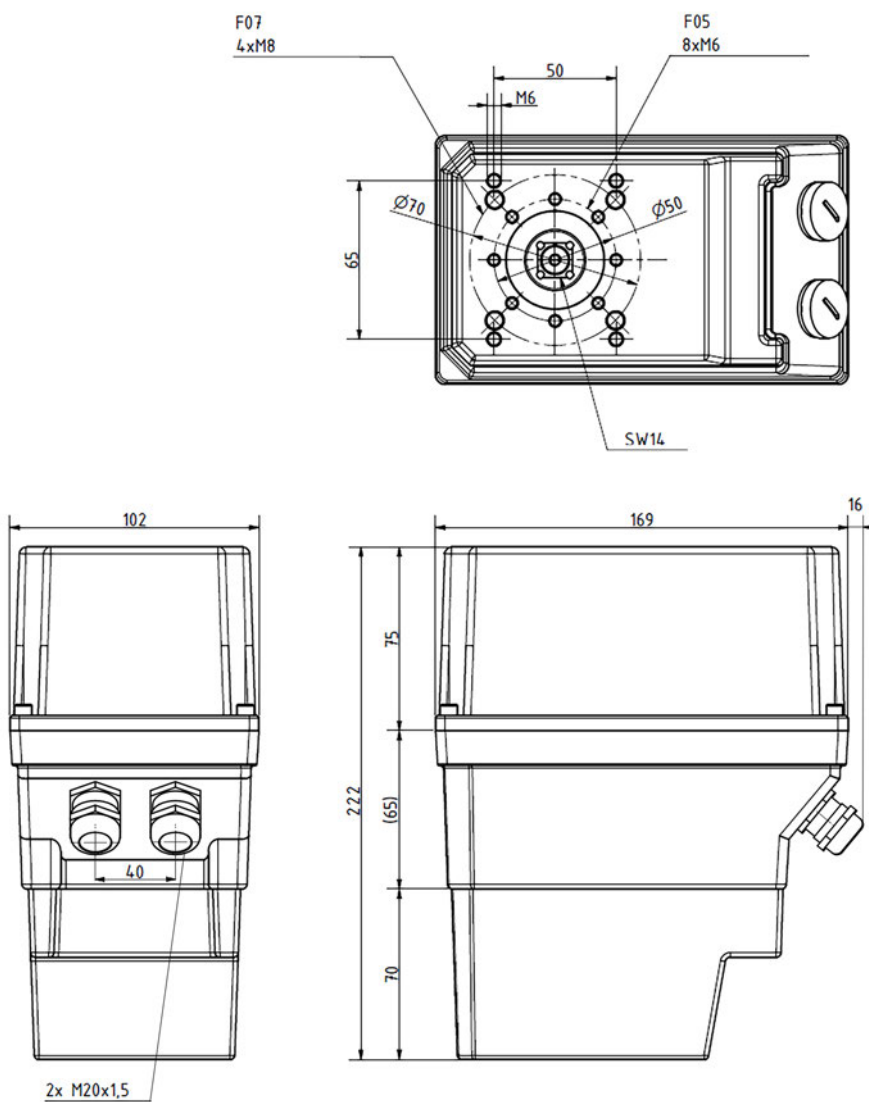


Fig. 2 Dimensional drawing 60 Nm actuator with cable entry point and screwed cable gland (dimensions in mm)

Technical Data Elektrical Actuator TPS60.1 - 60 Nm

Dimensions

Dimensions (H x W x D)	169 x 102 x 222 mm 6.65 x 4.02 x 8.74" in
Weight	4 kg 8.82 lb (the weight may differ depending on the configuration)
Material cover	Die-cast aluminium

Technical conditions

Motor insulation class	E	
Operating mode according to IEC 34-1	S1 – 100 %	
Motor protection	Standard	blocking resistant
Limit position switch-off	for OPEN and CLOSE position	
Control	Standard	3-point step control

Input Data 668M2060-1 - 60 Nm

		Optional:
Power supply (A15)	230 VAC	120 VAC
Power consumption	31 mA	65 mA
Capacitor	0,27 μ F / 600 V	1,5 μ F / 400 V
Input power synchronous motor	7 W	7,8 W
Output power	5,1 W	5,7 W

Technical specifications

Overload protection	none
Running time / angel of rotation (A20-6090)	60 s/90° at 50 Hz (48 s/90° at 60 Hz)
Running time / angel of rotation (A20-90135)	optional 90 s/135° at 50 Hz (72 s/135° at 60 Hz)
Running time / angel of rotation (A20-120180)	optional 120 s/180° at 50 Hz (96 s/180° at 60 Hz)
Position feedback (A25-1PO)	Potentiometer 5 k Ω CONTELEC, conductive plastic according to EN12067-2: 2004 annex C Connection to output shaft positive and free of backlash according to EN12067-2: 2004 paragraph 6.2.2) Max. angle of rotation angle 180°
Position feedback (A25-2PO)	optional Additional position feedback Potentiometer 5 k Ω CONTELEC, conductive plastic according to EN12067-2: 2004 annex C Connection to output shaft positive and free of backlash according to EN12067-2: 2004 paragraph 6.2.2) Max. angle of rotation angle 180°

Technical Data Elektrical Actuator TPS60.1 - 60 Nm

Technical specifications	
Position feedback (A25-1NOVO)	optional Potentiometer 5 k Ω NOVOTEC, conductive plastic according to EN12067-2: 2004 annex C Connection to output shaft positive and free of backlash according to EN12067-2: 2004 paragraph 6.2.2) Max. angle of rotation angle 90° With NOVOTEC potentiometers, a position indicator or a 2nd potentiometer is not possible.
Direction of rotation (A30-R)	rotation to the right (clockwise 12.00 to 3.00 o'clock with view onto the shaft).
Direction of rotation (A30-L)	optional rotation to the left (anti-clockwise 12.00 to 9.00 o'clock with view onto the shaft)
Option Position indicator (A55-POS1)	optional Position indicator in housing cover (Only possible with CONTELEC potentiometer and for safe area)
Repeatability	0,2°
Radial bearing force	400 N
Damage pattern by mech. overload	Gear unit defect
Board gear	
Gear wheels/backlash	Spur toothed /max. 1°
Bearing	plain bearing/ball bearing, free of maintenance

Housing Heating

Option housing heating (A60-HEAT1)	optional housing heating 230 VAC, down to -30 °C -22 °F ambient temperature
Option housing heating (A60-HEAT2)	optional housing heating 120 VAC, down to -30 °C -22 °F ambient temperature

Cable Entry

Cable entry (A70-M20)	2x cable gland M20 x 1,5, metal, cable \varnothing min. 8,0 mm, 0.31" in, max. 13,0 mm 0.51" in
Cable entry (A70-M20KS)	optional 2x cable gland M20 x 1,5, plastic cable \varnothing min. 6,0 mm 0.24", max. 12,0 mm 0.47" in
Cable entry (A70-M25)	optional 2x cable gland M25 x 1,5, metal, cable \varnothing min. 14,0 mm 0.55" in, max. 20,0 mm 0.79" in
Cable entry (A70-M16)	optional 2x cable gland M16 x 1,5, metal, cable \varnothing min. 5,0 mm 0.20" in, max. 9,0 mm 0.35" in
Connecting cable for position feedback	3-pins, shielded 0.52 ... 1.52 (AWG20 ... 14) stripping length 7.5 ... 8.5 mm, 0.5 mm ² ... 1.5 mm ² 0.30 ... 0.14" in, 21 ... 16 AWG

Technical Data Elektrical Actuator TPS60.1 - 60 Nm

Cable Entry		
Connecting cable for line voltage Controlling without manual adjusting	4-pins (3+PE) 0.52 ... 2.52 (PE / N / AUF / ZU) length 10 mm, 0.5 mm ² ... 2.5 mm ² 0.39" in, 21 ... 14 AWG	
Connecting cable for line voltage Controlling with manual adjusting	5-pins (4+PE) 0.52 ... 2.52 (PE / N / L / AUF / ZU) stripping length 10 mm, 0.5 mm ² ... 2.5 mm ² 0.39" in, 21 ... 14 AWG	
Connecting cable for line voltage, controlling, case heating, with/without manual adjusting	5-pins (4+PE) 0.52 ... 2.52 (PE / N / L / AUF / ZU) stripping length 10 mm, 0.5 mm ² ... 2.5 mm ² 0.39" in, 21 ... 14 AWG	
Operating Condition		
Life time	The actuators exceed the service life requirements of EN 15714-2 Class C 'Modulation'. 250'000 starts in OPEN/CLOSED direction. (Detailed information on request).	
Mounting position	any, but not hanging downwards	
Positioning accuracy	< 1 %	
Installation height	≤ 2,000 m 6,561.68 ft above sea level > 2,000 m 6,561.68 ft above sea level on request	
Environmental conditions		
Storage	In according to DIN EN 60721-3-1, class IE12	
	relative temperature range	-25 °C ... +55 °C -13 °F ... 131 °F
	relative air humidity	< 95 %
Transport	In according to DIN EN 60721-3-2, class IE23	
	relative temperature range	-25 °C ... +60 °C -13 °F ... 140 °F
	relative air humidity	< 95 %
Operation	Class IE36 in according to DIN EN 60721-3-2	
	relative temperature range	-20 °C ... +60 °C -4 °F ... 140 °F with additional case heating -30 °C ... +60 °C -22 °F ... 140 °F
	relative air humidity	< 95 %
Degree of protection	according to DIN EN 60529	IP65

NOTICE

The limits of the technical data must be strictly adhered to.

Technical Data Elektrical Actuator TPS60.1 - 60 Nm

Order Information

NOTICE

All options marked with * correspond to the standard selection.

Electrical Actuator 60 Nm

Description/Type	Order no.
Electrical actuator 60 Nm, TPS, position feedback potentiometer 5 kΩ, conductive plastic, 2 end position switches to limit the actuator, electric hand feed, IP65	668M2060-1...
A05 "TORQUE"	
TORQUE 60 Nm	60NM*
A10 "FORM OF OUTPUT SHAFT"	
SQUARE HOLLOW SHAFT 14 x 14 mm 0.55 x 0.55" in	IVK14*
Round shaft 20 x 50 mm 0.79 x 1.97" in, with feather key 6 x 6 x 32 mm 0.25 x 0.24 1.26" in	20x50
Round shaft 12 x 40 mm 0.47 x 1.57" in, with feather key 4 x 4 x 20 mm 0.16 x 0.16 0.79" in	12x40
A15 POWER SUPPLY VOLTAGE	
120 VAC/50 Hz	120 VAC
230 VAC/50 Hz	230 VAC*
A20 "RUNNING TIME / ANGLE OF ROTATION"	
60 SECONDS/90° (60 SEC./50 HZ/48 SEC./60 HZ)	6090*
90 SECONDS/135° (90 SEC./50 HZ/72 SEC./60 HZ)	90135
120 SECONDS/180° (120 SEC./50 HZ/96 SEC./60 HZ)	120180
A25 "POSITION FEEDBACK"	
1 x POTENTIOMETER 5 kΩ CONTELEC, CONDUCTIVE PLASTIC, APPROVED IN ACCORDANCE TO EN12067-2, FORM CLOSURE CONSTRUCTION, FREE OF BACKLASH, Position feedback only for CMS	1PO*
2 x POTENTIOMETER 5 kΩ CONTELEC, CONDUCTIVE PLASTIC, APPROVED IN ACCORDANCE TO EN12067-2, FORM CLOSURE CONSTRUCTION, FREE OF BACKLASH, Position feedback only for CMS	2PO
1x POTENTIOMETER 5 kΩ NOVOTEC, CONDUCTIVE PLASTIC, APPROVED IN ACCORDANCE TO EN12067-2, FORM CLOSURE CONSTRUCTION, FREE OF BACKLASH, Position feedback for ETAMATIC, FMS, VMS, CMS With NOVOTEC potentiometers, a position indicator or a 2nd potentiometer is not possible.	1NOVO
A30 "DIRECTION OF ROTATION" (view onto the shaft, parallel key at 12.00 o'clock)	
CLOCKWISE (12.00 TO 3.00 O'CLOCK)	R*
ANTI CLOCKWISE (12.00 TO 9.00 O'CLOCK)	L

Technical Data Elektrical Actuator TPS60.1 - 60 Nm

A40 "ADAPTION"

Selection

FLANGE FIXING IN ACCORDANCE TO ISO5211

– F05 Ø50 mm | 1.97" in, 8x M6

– F07 Ø70 mm | 2.76" in, 4 x M8

– 65 x 50 mm | 2.56 x 1.97" in, 4 x M6

ADAPTION IN ACCORDANCE TO CUSTOMER SPECIFICATION

F05F07*

A45 "COLOUR"

Selection

COVER RED RAL3020

Further colours on request

RT*

A50 "CUSTOMER"

Selection

LAMTEC TYPE

S*

A55 "POSITION INDICATOR"

Selection

WITHOUT

POSITION INDICATOR IN THE COVER¹

POS0*

POS1

1 Only possible with CONTELEC potentiometer.

A60 "HOUSING HEATING"

Selection

WITHOUT

HOUSING HEATING 230 V, DOWN TO -30 °C

HOUSING HEATING 120 V, DOWN TO -30 °C

HEAT00*

HEAT1

HEAT2

A70 "CABLE ENTRY"

Selection

2x CABLE GLAND M16 METAL

2x CABLE GLAND M20 METAL

2x CABLE GLAND M20 PLASTIC BLACK

2x CABLE GLAND M25 METAL

CABLE GLAND IN ACCORDANCE TO CUSTOMER SPECIFICATION

M16

M20

M20KS*

M25

A99 "SPECIAL CONFIGURATION"

Selection

WITHOUT

SO0*

NOTICE

The limits of the technical data must be strictly adhered to.

The information in this publication is subject to technical changes.



**LAMTEC Meß- und Regeltechnik
für Feuerungen GmbH & Co. KG**

Josef-Reiert-Straße 26

D-69190 Walldorf

Telefon: +49 (0) 6227 6052-0

Telefax: +49 (0) 6227 6052-57

info@lamtec.de

www.lamtec.de

