

## USB CAN Module for LSB Remote Software

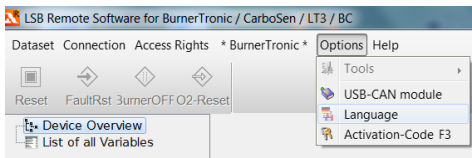
Our manufacturer SYSTEC has released its module due to the change of microcontrollers in revision 5. Hence a development of a new driver was necessary. This driver unit also supports USB-CAN Module of revisions 3 and 4. USB-CAN Module of revision 2 and earlier would not be supported by the driver unit of revision 5.



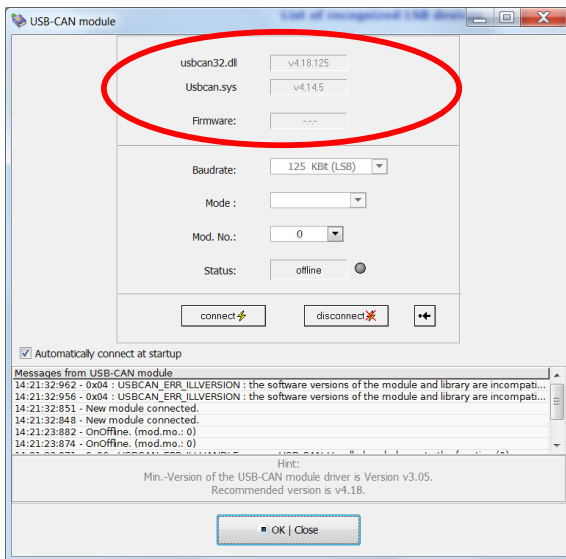
USB CAN Module of Revision 4 (Rev. 4)

We have discovered that a USB-CAN Module of revision 4 can no longer be operated on a computer with an installed driver of revision 4, if it is used on a computer with a driver of revision 5 (\*).

The installed driver version on the computer can be established with the LSB Remote Software as following:



Menu selection in LSB Remote Software:  
Options >> USB CAN Module



Display of installed driver

If you have got the above described behaviour (\*), you will get the following message in USB CAN Module window:

The maloperation can only be eliminated through an update of the USB CAN driver.

The driver can be found in the download section of our homepage (<http://www.lamtec.de/service-support/downloads.html>).

