

Technical Data Flame Monitoring Device F152



Fig. 1 F152 ...

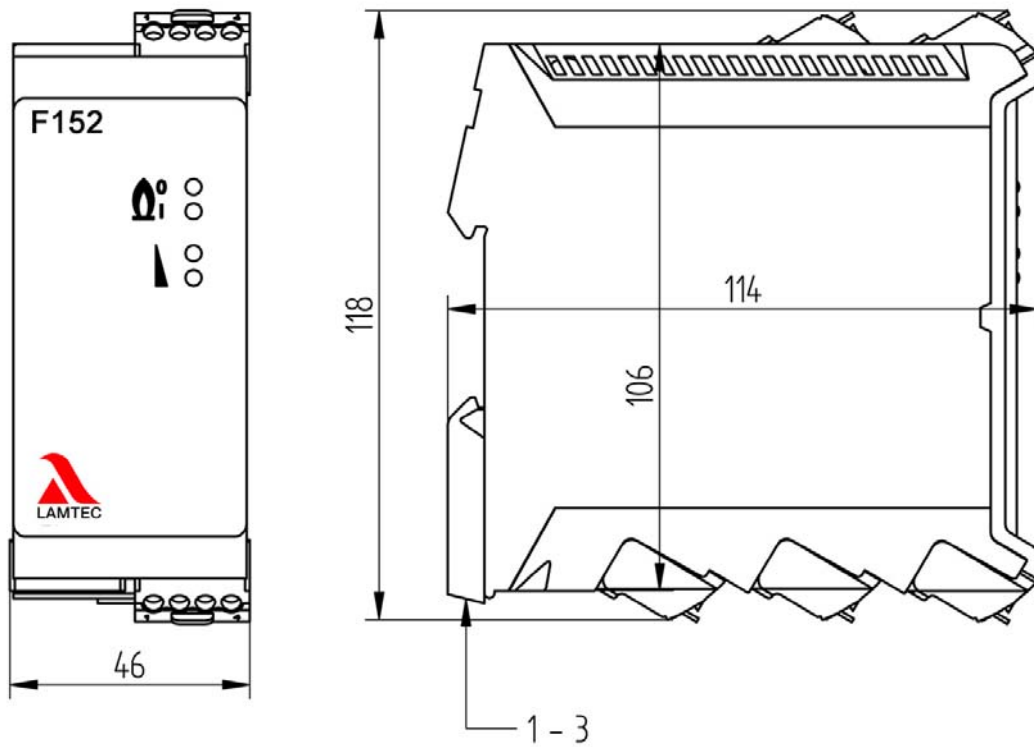


Fig. 2 Dimensional drawing F152

Technical Data Flame Monitoring Device F152

Dimensions	
Dimensions (HxWxD)	118x114x46 mm / 4.64"x4.49"x1.81" in
Weight	0,5 kg / 1.1 lb
Input parameters	
Auxiliary energy	
Supply voltage ¹	230 VAC +10 % -15 % 115 VAC +10 % -15 %, on site 120 VAC +10 % -20 %, UL Recognized version
Mains frequency ¹	50/60 Hz
Power consumption	≤ 5 VA
Device fuse (soldered)	0.1 A (230 V); 0,2 A (115/120 V); delay fuse
¹ The product must not be transported, stored or operated outside the specified range. If it is, any guarantees with regard to safety-related functions lose their validity.	
Output parameters	
Output contact indicator signal	NC (changer floating) - non-failsafe
Output contact flame signal	NO (changer floating) - failsafe
Permissible switching voltage ¹	max. 250 VAC; 120 VDC min. 10 VAC/DC
Permissible switching current ¹	max. 0.5 A cosφ 0.4 at ≤ 60 °C/ 140 °F min. 10 mA (for a critical load 50 mA) ² Provide spark suppression externally for inductive loads, do not switch capacitive loads.
Contact fuse (soldered) ¹	0,5 A delay fuse IEC 60127-3
Safety time (FFDT) Response time in the event of the flame going out	$t_{VAus} \leq 1 \text{ s}$
Start-up delay	$t_{VEin} \leq 1.3 \text{ s}$
Auxiliary energy for flame scanners	
Voltage	max. 30 VDC min. 24 VDC
Self-monitoring pulse	
Pulse	ca. 1.5 s
Current loop	Flame intensity - non-failsafe
Current	0 ... 20 mA
Load	max. 500 Ω
Open circuit voltage	22 ... 26 V
Base error	± 2 %
Spare parts	
	non

Technical Data Flame Monitoring Device F152

Technical capacity		
Cross section	flexible	0.25 ... 2,5 mm ² / 23 ... 13 AWG
	rapid	0.20 ... 2.5 mm ² / 24 ... 13 AWG
Operating mode	permanent operation 72 h operation according to TRD 604	
Safety integrity level	DIN EN 61508 part 2 - SIL 3	
Overvoltage category	DIN EN 60730-1, ÜK III	
Electromagnetic interference	DIN EN 60730-1	
Emitted interference	DIN EN 55022, class B	
Operating Condition		
Relative humidity	20 % ... 90 % non-condensing	
Environmental Conditions ¹		
Operation	permissible temperate range	-10 ... +60 °C / +14 ... +140 °F
Transport	permissible temperate range	-10 ... +85 °C / +14 ... +185 °F
Storage	permissible temperate range	-10 ... +85 °C (in enclosed spaces)
Degree of protection	DIN EN 60529	IP20

¹ The product must not be transported, stored or operated outside the specified range. If it is, any guarantees with regard to safety-related functions lose their validity.

² If limit load is exceeded i.e. because of a contactor burden, the described minimum value can not be guaranteed. The minimum value is important for SPS-applications.

Order Information

Flame monitoring device F152 (SIL 3 in according to IEC 61508-2) in combination with flame sensor FFS07/08

Description / type	Order no.
Flame monitoring device F152, power supply voltage 230 VAC	659G0501
Flame monitoring device F152, power supply voltage 120 VAC	659G0502



The information in this publication is subject to technical changes.



**LAMTEC Meß- und Regeltechnik
für Feuerungen GmbH & Co. KG**

Wiesenstraße 6
D-69190 Walldorf
Telefon: +49 (0) 6227 6052-0
Telefax: +49 (0) 6227 6052-57

info@lamtec.de
www.lamtec.de

