



Flame Scanner F350/FFS30

Sensors and systems for combustion engineering



www.lamtec.de

LAMTEC's New Generation of Flame scanner Systems Is Expanding.

LAMTEC's Flame scanner product line is supplemented by another innovative Flame scanner, the dual sensor Flame scanner F350/FFS30, which is equipped for various areas of application and nearly all monitoring tasks.

Supply voltage: 24 VDC
Relay output: ≤ 250 VAC
 ≤ 120 VDC

The flame sensor FFS30's housing is made from well-proven, high-quality noble steel. Plug-ins or screwed cable glands are directly at the sensor housing. Advantage: The mounting for FFS05 and FFS07 can be used for FFS30 as well.

Through its fail-safe contact, the system is compatible with any burner control system. The F350 can be configured on-site using the external User Interface FB30. The Flame scanner is bus-compatible and through that able to communicate with other systems. Using a remote software and the FSB, Flame Scanner Bus, all connected devices can be controlled.

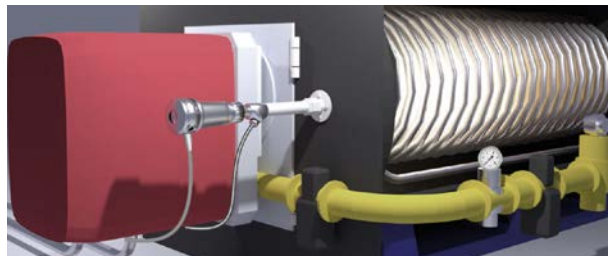
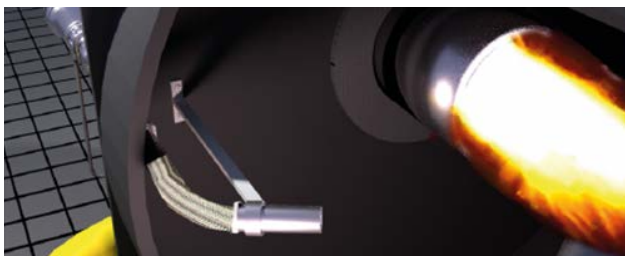
Highlights:

- F350 is a safety-related, independent Flame scanner
- Configured via external user interface FB30
- Operated via remote software
- Protection class IP67
- EX Zone I and EX Zone II
- Fail-safe iFSB
- Cable length between FFS30 and F350 up to 80m
- Same Dimensions as FFS05/FFS07
- Same mounting as FFS05/FFS07



FFS30 FO with Fibre Optic

- For application in boiler plants with limited visibility of the flame
- Designed for high temperature in normal areas of installation of a Flame scanner and up to 350°C



Type	Spectrum/nm	Viewing angle ca.	Preferred area of application/fuel
FFS30 UV 4	215 ... 360	8°	<ul style="list-style-type: none"> ■ Oil ■ Gas ■ Dust ■ Special application combined with fibre optic ■ Special gases such as refinery gas, blast-furnace gas and hydrogen
FFS30 UV 4.6	215 ... 360	8°	<ul style="list-style-type: none"> ■ Special application combined with fibre optic
FFS30 IR 2	850 ... 1200	20°	<ul style="list-style-type: none"> ■ Combustion chamber monitoring
FFS30 IR 3	1000 ... 1700	60°	<ul style="list-style-type: none"> ■ Combustion of oil, gas, coal, and dust with intense FGR ■ Waste gas with yellow colouring without UV radiation or with screening of UV parts through steam and dust
FFS30 IR 4	1000 ... 2200	60°	
FFS30 UVIR 1	215 ... 360 850 ... 1700	8° 8°	<ul style="list-style-type: none"> ■ UV: ■ Oil, gas, special gases such as refinery gas and blast-furnace gas ■ IR: ■ Oil, gas, wood, coal, dust combustion with intense FGR ■ Waste gas with yellow colouring without UV radiation or with screening of UV parts through steam and dust ■ Special application combined with fibre optic

Accessories.

External User Interface (UI) FB30

- All functions of the integrated User Interface
- One control unit can be connected to one or more F350/FFS30 and F300K
- The external UI FB30 be directly connected via a socket
- The FB30 uses the same 24 VDC power supply as the connected F350



UI FB30

Fibre Optic

Available Versions

- Solid housing
- Flexible housing

Available Lengths:

- Solid housing 1.0 m to 10 m / 0.5 m steps
- Flexible housing 1.5 m to 10 m / 0.5 m steps



Fibre Optic System

FSB Gateway

- The FSB gateway is a connection to the control unit
- Data from one or up to 32 F350/FFS30 sensors can be transmitted via the field bus of the control unit without a problem



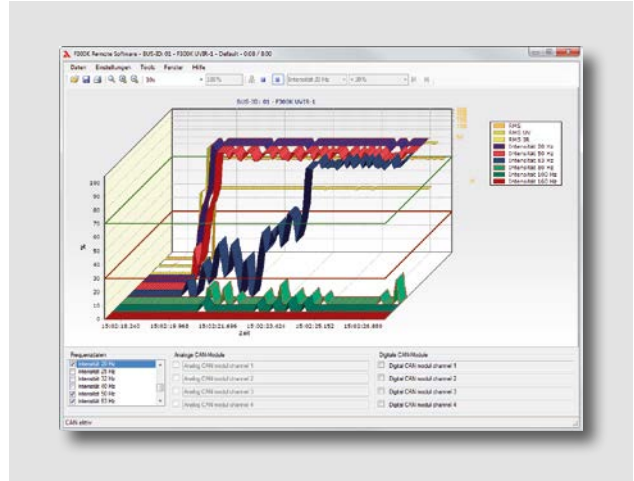
FSB Gateway

FSB Gateway is available for the following fieldbus versions:

- PROFIBUS (Slave)
- MODBUS TCP (Client/Server)
- MODBUS RTU (Master/Slave)
- Ethernet (Frame)
- CANopen

F300K Remote Software

- Connection to PC via FSB/USB module and adapter cable
- The remote software enables a full parameterisation. Using the software, data can be recorded, saved, and analysed.
- More external, analogue and/or digital data can be received and recorded using the FSB module. The software will synchronise the data.



F300K Remote Software

Connection Box

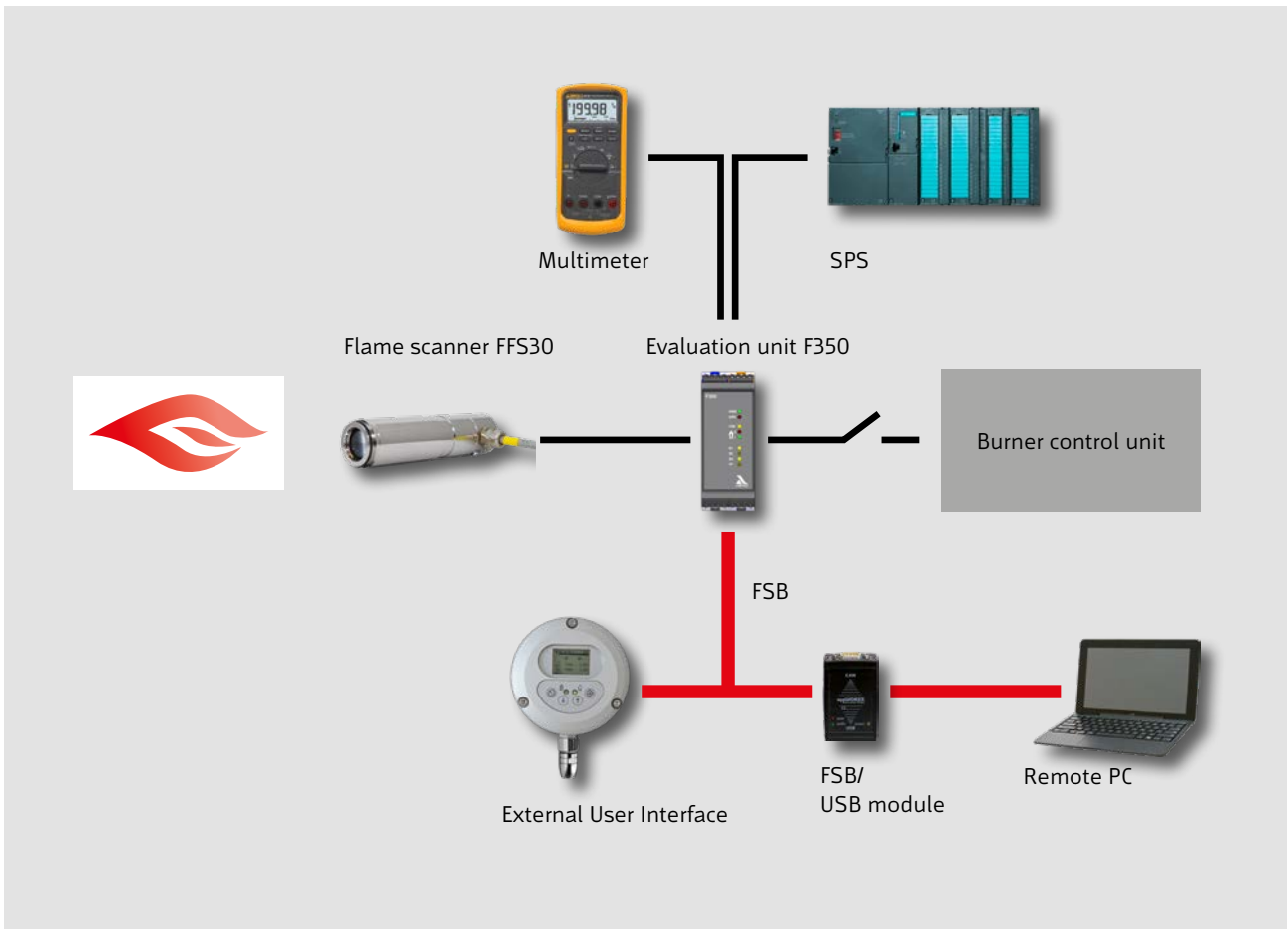
Available versions:

- | | |
|--------------------------------------|----------|
| Connection box FG21 2 Aluminium IP65 | 659R0110 |
| Connection box FG24EX Polyester IP65 | 659R0111 |

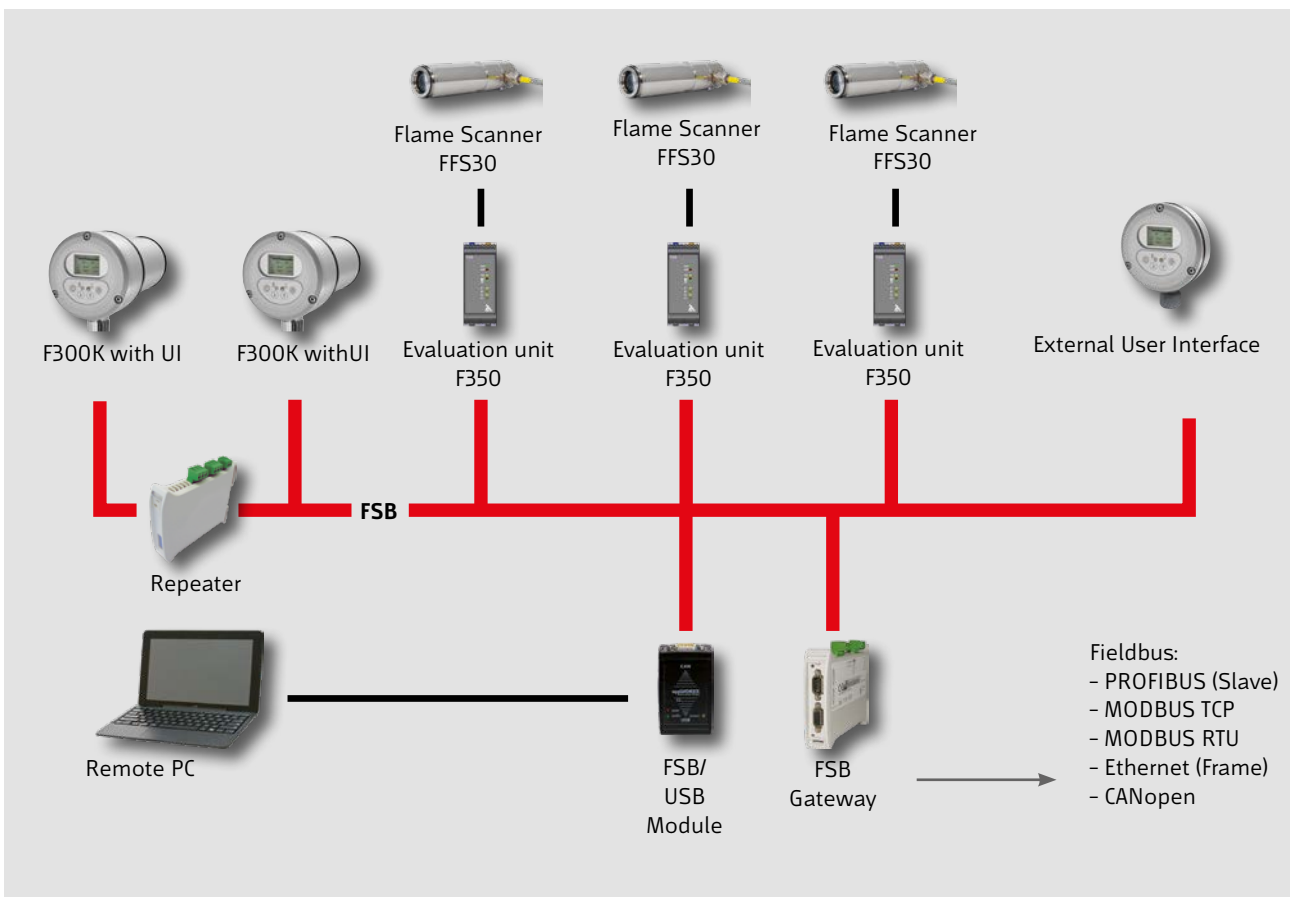


FG21 2

FG24EX



Example: Connection with a burner control unit



Example: Connection of multiple Flame scanner systems. F350 can be combined with the F300K without a problem.

Notes.



**LAMTEC Meß- und Regeltechnik
für Feuerungen GmbH & Co. KG**

Josef-Reiert-Straße 26
D-69190 Walldorf

Telephone: +49 (0) 6227 6052-0
Fax: +49 (0) 6227 6052-57

info@lamtec.de

www.lamtec.de

