

System Overview

VISIOCONTROL 4.0

Sensors and systems for combustion engineering



www.lamtec.de

VISIOCONTROL 4.0

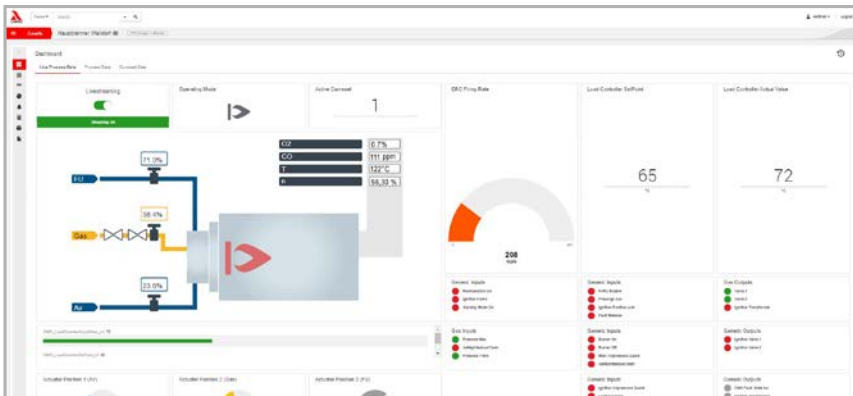
Live Data Monitoring

LAMTEC VISIOCONTROL 4.0 enables remote data exchange for all equipment controlled by LAMTEC BMS to enhance service, support and optimisation for OEM burner manufacturers and plant operators.

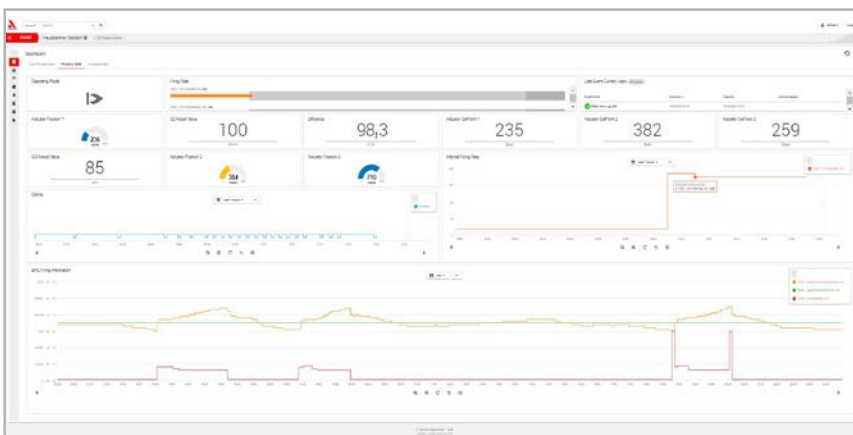
VISIOCONTROL 4.0 offers the possibility for users to remotely monitor the combustion plant and coordinate resources.

Features:

- Continuous data backup and live data transmission
- Event and alarm management
- Visualisation of burners and applications, grouped by customer and/or region
- Customisable screens by widgets
- Multidimensional customer and location management
- Cross-locational data analysis
- Preventive maintenance
- Support during commissioning including online support and troubleshooting
- Status monitoring
- Filterable alarm histories
- Triggering of events and alarm messages and sending this
- Data monitoring
- Multi-client capability
- Improving efficiency
- Customer-specific visualisation easy to integrate
- Direct access to online updates or additional purchase of options (in preparation)
- Extendable functionality



VISIOCONTROL 4.0 / Dashboard / Live Process Data



VISIOCONTROL 4.0 / Dashboard / Live Process Data / Configurable by widgets

VISIOCONTROL 4.0

Live Data Monitoring

NBM100 (Network Bus Module)

The NBM100 collects data from burner control units and their peripherals. If required, non-failsafe signals such as regular firing rate input can be passed on to the burner control unit.

Burner data can be accessed transparently via the VISIOCONTROL 4.0 cloud application. The representation of the data can be customised and is configured using a series of widgets.

The NBM100 with its connection to the VISIOCONTROL 4.0 is able to fulfill highest IT security standards.



NBM 100

Overview VC 4.0 infrastructure



CMS security - S4S (security for safety) in cooperation with the TÜV*

IT security is an important and contemporary topic. But remote access also involves risks. LAMTEC, in conjunction with TÜV Nord, has developed VISIOCONTROL 4.0 to the IEC62443 standard that specifies the process requirements for the secure development of products used in industrial automation and control systems.

The development of IoT and Industry 4.0 in which industrial processes and manufacturing, and digitally controlled equipment rely increasingly on data exchange, has increased the susceptibility to cyber attacks. LAMTEC has addressed this issue by adopting IEC62443 into the CMS and VISIOCONTROL 4.0 product development.

The keystone of VISIOCONTROL 4.0 is the NBM100 (Network Bus Module) which connects the LAMTEC Burner Management Controllers to the Internet.

* in preparation

VISIOCONTROL 4.0

Different components, suitable for your needs

The following options are available:

1. Gateway NBM100

667R0750-1

Hardware - One NBM can bring up to 4 CMS / BT300 to VISIOCONTROL 4.0

2. User licence

668R1160

VISIOCONTROL 4.0 - User licence for 1 year per system (per CMS or BT)

3. Individual set-up

668R1180

Customised set-up of plant visualisation and reporting

4. Package of license and set-up

668R1150

NBM100 Gateway and 2-Year Licence for VISIOCONTROL 4.0

This contains a plant image in GUI design and includes standard feature set as listed below:

- Display of the actuators, the fuel/air curves, as well as the O₂/ CO- and their learning curves
- Thus also of the load and the current values of O₂, CO_e, NO_x from the LAMTEC analyser
- Furthermore, the status of the digital inputs and outputs
- Faults are stored as events
- The same applies to plant start and plant stop

1 x mail notification to one person in the event of a fault

1 x SMS notification to one mobile number in the event of a fault

5. Modem without SIM card

668R1170

LTE/3G modem for mobile network connection of the NBM100 - without SIM card.



**LAMTEC Meß- und Regeltechnik
für Feuerungen GmbH & Co. KG**

Josef-Reiert-Straße 26
D-69190 Walldorf

Telephone: +49 (0) 6227 6052-0

Fax: +49 (0) 6227 6052-57

info@lamtec.de

www.lamtec.de

